

Neenah R-4990-HX Unbolted

Series

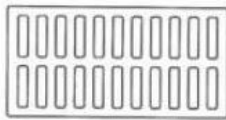
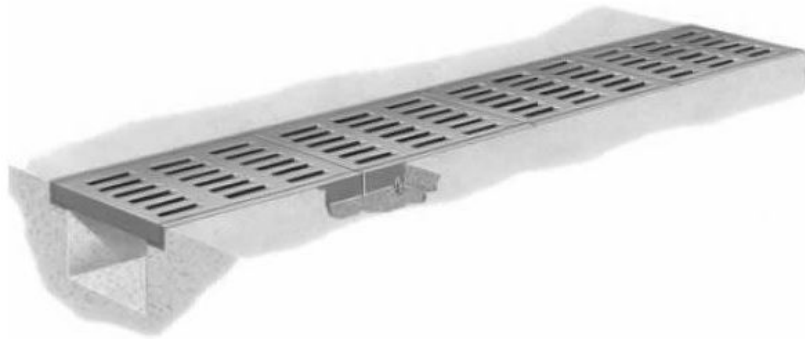
R-4990-HX

Cut Sheet

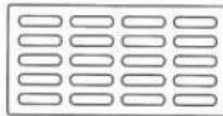
26" Wide Unbolted

26" Wide NEENAH Unbolted Heavy Duty Trench Drain Grates and Frames

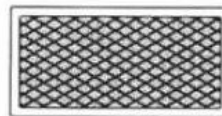
Product ID: R-4990-HX



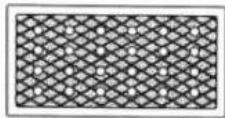
TYPE A
GRATE OPENINGS



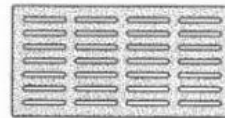
TYPE C
GRATE OPENINGS



TYPE D
SOLID LID



TYPE E
VENTED LID



TYPE Q
GRATE OPENINGS

26" Wide Unbolted Neenah R-4990-HX Series Trench Grate

26"W X 24"L X 1 1/2"D

Choose Type A,C,D,E,Q

Materials: All frames and grates/lids are furnished standard in gray iron, meeting ASTM-A48 Class 35-B for heavy-duty use. In Type A and P grates the slots are perpendicular to the trench run. In Type C and Q grates the slots are parallel with the trench run.

Neenah recommends project designers avoid the use of light duty trench installations because it is likely that applications will be subjected to heavy delivery vehicle traffic at some time. Furthermore, the use of a site could be changed to heavy duty use patterns at some unanticipated future date.

